



漁農自然護理署
Agriculture, Fisheries and
Conservation Department



香港
濕地公園
Hong Kong
Wetland Park

香港濕地公園 Hong Kong Wetland Park

學校教育活動便覽 
School Education Programme Prospectus



目錄 Contents

- 1 我們的使命
Our Mission
- 2 為何選擇濕地公園
Reasons for Visiting Hong Kong Wetland Park
- 3 濕地校園 — 地圖
Wetland Campus – Map
- 4 濕地校園 — 景點描述
Wetland Campus – Description of Attractions
- 6 計劃你的行程
Plan Your Journey
- 7 學生教育活動
Education Programmes for Students



- 7 幼稚園導賞活動
Kindergartens Guided Tours
- 10 小學導賞活動
Primary Schools Guided Tours
- 16 中學導賞活動及「其他學習經歷」活動（高中）
Secondary Schools Guided Tours & "Other Learning Experiences" Activities (Senior Secondary)
- 26 濕地自遊賞
Self-paced Visit Offers
- 27 濕地遊蹤（幼稚園）
Wetland Footprints (Kindergartens)
- 28 建議路線
Route Suggestions
- 30 可租用場地
Venues for Hire
- 31 教師教學支援
Teaching Support for Educators
- 31 網上教學資源
Online Teaching Resources
- 32 教師工作坊
Teachers' Workshops
- 33 教育展覽板借用
Lending Service of Education Display Panels
- 34 教具借用
Lending Service of Teaching Aids
- 35 教師專頁及最新消息
Teachers' Page & Latest News
- 36 野生動植物月曆
Wildlife Calendar

我們的使命

香港濕地公園的使命是加強市民對東亞濕地及其他地區濕地的認識和了解，並爭取市民支持和參與濕地護理工作，同時為香港市民及海外遊客提供一個世界級的生態景點。

Our Mission

The mission of the Hong Kong Wetland Park (HKWP) is to foster public awareness, knowledge and understanding of the inherent values of wetlands throughout the East Asian region and beyond, and to marshal public support and action for wetland conservation. The HKWP is also a world-class ecotourism facility to serve both local residents and overseas tourists.

在環境及 STEM 教育方面，香港濕地公園提供 HKWP supports environmental and STEM education by providing



為何選擇香港濕地公園？ Reasons for Visiting HKWP

60 公頃戶外保護區
hectares Wetland Reserve

10,000 平方米訪客中心
square metres Visitor Centre

5 展覽廊
galleries

270+ 鳥類品種
bird species

600+ 植物品種
Plant species

170+ 蝴蝶品種
Butterfly species

50+ 蜻蜓品種
dragonfly species

50+ 其他濕地動物品種
Other wetland animal species

20 多元的教育活動
diverse education programmes

教師參觀後感想*

Teachers' feedback after visiting*

99% 認同學生學到濕地的功用及濕地常見的動植物。
Agreed that students had learnt about the functions of wetlands and common animals and plants in wetlands.

97% 認同導賞活動的內容切合教學需要。
Agreed that the content of the tour matched with their teaching purposes.

97% 認同參加導賞活動後，學生更有興趣了解大自然。
Agreed that students became more interested in the natural environment after participating in the tour.

* 資料來源：2018-2019 香港濕地公園教育活動教師意見調查

* Data source: 2018-2019 Teachers' questionnaire survey on Hong Kong Wetland Park's education programmes

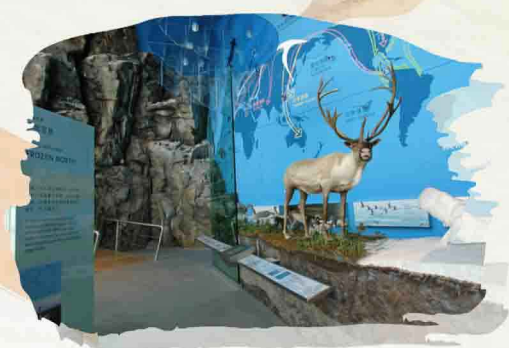




1 入口廣場 Entry Plaza

訪客可於入口廣場參觀不同的裝置藝術、雕塑、蠔殼牆屏風等設施，亦可前往綠化屋頂欣賞濕地公園的景色。

Entry plaza includes various art installations and oyster shell walls as well as the green roof for visitors to start with their exploration at the Hong Kong Wetland Park.



2 訪客中心及展覽廊 Visitor Centre and Galleries

面積 10,000 平方米的訪客中心共設有五個展覽廊。各展館會從不同焦點展現濕地的功能和價值，亦展示了全球從熱帶到極地不同形態的濕地。

There are five galleries in the 10,000 square metres Visitor Centre showing different aspects of wetlands. The galleries also reveal wetlands around the world from the poles to the tropics in various forms.

4 溪畔漫遊徑 Stream Walk

模擬香港的溪流生境，沿途可以看到蜻蜓、豆娘及淡水魚等濕地動物。

The Stream Walk simulates the stream habitat in Hong Kong. You can see dragonflies, damselflies and freshwater fish along the way.



3 貝貝之家 Pui Pui's Home

探訪香港鱷魚明星「貝貝」，探索濕地生態之旅由此展開！

Begin the journey to explore the biodiversity of wetlands and visit Pui Pui, the crocodile star of Hong Kong!



5 生態探索區 Life Zone

探索水池內的水生生物及了解牠們如何適應濕地的生境。

Explore for aquatic lives in ponds, and learn about how they adapt to wetland habitats.



6 濕地探索中心 Wetland Discovery Centre

在生趣軒及水文軒內自由參觀，認識不同的濕地產物，並近距離觀賞棲息於濕地的小動物。

Visitors can freely visit the Life Lab and Wet Lab to find different wetland products, and take a closer look to various wetland creatures.

8 演替之路 Succesion Walk

開闊水體上的步道讓訪客探索水生植物。訪客更可探索植物品種怎樣隨生境改變，從一個開闊水體，演替成濕木林。

A boardwalk over open water takes visitors along a trail of aquatic plants. Explore the changes of species as the habitat changes from open water to finally wet woodlands.



7 濕地工作間 Wetlands at Work

在這片水耕農田中種植了薏苡、慈姑及薺菜等水生農作物，一起了解濕地對人類日常生活的重要性吧！

Aquatic crops such as Job's Tear, Chinese Arrow-Head and Water Spinach are planted in these wet farmlands. Here you can learn the importance of wetlands to our daily lives.



河畔觀鳥屋
Riverside Hide



泥灘觀鳥屋
Mudflat Hide



魚塘觀鳥屋
Fishpond Hide

從觀鳥屋你可以觀察到不同的鳥類，如鷺鳥、翠鳥及黑臉琵鷺等。

From these bird hides, you can look for a great variety of residents and migratory birds such as egrets, kingfishers and black-faced spoonbills.



10 果樹路 Fruit Path

訪客可以近距離觀察和學習辨認種於路旁的果樹和被吸引前來覓食的鳥類和昆蟲。

Some common fruit trees are planted along the pavement that attract birds and insects to look for their food here.

14 蝴蝶園 Butterfly Garden

在蝴蝶園種植了許多蝴蝶喜愛的蜜源植物及寄主植物，吸引各種蝴蝶前來翩翩起舞。

The Butterfly Garden is planted with numerous food plants and nectar plants for butterflies. You can see different kinds of butterflies flying around the habitat.



11 紅樹林浮橋 Mangrove Boardwalk

在浮橋兩旁你可看到許多紅樹，潮退時，不同的潮間帶動物如招潮蟹和彈塗魚等亦會出來於泥地上活動，十分有趣。

Different species of mangrove can easily be seen along the sides of boardwalk, you will also find many inter-tidal animals during low tide, such as fiddler crabs and mudskippers.



計劃你的行程 Plan Your Journey

1

選擇參觀時間
及主題

Select Time and
Themes

公園開放時間 Opening Time

星期一至日 * 上午 10 時至下午 5 時
Mon to Sun * (10am to 5pm)

* 星期二休息 (公眾假期除外)
Close on every Tue (Except Public Holiday)

選擇學習主題 Select Learning Themes

參考野生動植物月曆 (36 - 37 頁)
Refer to the Wildlife Calendar (p. 36 - 37)

2

選擇參觀方式
Select Mode of
Visit

導賞活動 Guided Tours

幼稚園 (7 - 9 頁)
小學 (10 - 15 頁)
中學 (16 - 25 頁)

Kindergartens (p. 7 - 9)
Primary Schools (p. 10 - 15)
Secondary Schools
(p. 16 - 25)

透過網上、電郵或傳真報名
Booking through online application, email or fax
(電郵及傳真只適用於中學「其他學習經歷」的活動)
(Email and fax only applicable to "Other Learning Experiences" activity.)

自行參觀 Self Visits

濕地自遊賞 (26 頁)
Self-paced Visit Offers
(p. 26)

– 附送紀念品
With souvenirs

濕地遊蹤 (27 頁)
Wetland Footprints (p. 27)

– 只適用於幼稚園
For kindergartens only

透過電郵或傳真報名
Booking through email or fax

3

準備學習活動
Prepare Learning
Programmes

• 建議路線 (28-29 頁)
Route Suggestions
(p.28-29)

• 可租用場地 (30 頁)
Venues for Hire (p.30)

• 網上教學資源 (31 頁)
Online Teaching
Resources (p.31)

• 教師工作坊 (32 頁)
Teachers' Workshops (p.32)

• 教育展覽板借用 (33 頁)
Lending Service of
Education Display Panels
(p.33)

• 教具借用 (34 頁)
Lending Service of
Teaching Aids (p.34)

幼稚園 - 導賞活動 Kindergartens - Guided Tours

幼童對四周事物充滿好奇。在幼稚園系列的導賞活動中，我們的導賞員會以生動有趣的教學方式，讓幼童利用不同感官體驗大自然，一起發掘身邊有趣的濕地動植物，展開繽紛的濕地旅程。

Children love to explore their surroundings. In this guided tour series for kindergartens, our nature interpreters will lead children to experience the nature using their different senses. On this fascinating adventure, children will get to have close encounters with interesting wetland animals and plants.



導賞活動 主題索引 Index to themes of guided tours



幼稚園 - 濕地體驗 I Kindergartens - Park Experience I

A 與濕地動物做朋友 (全年) Making Friends with Wetland Animals (Whole Year)



- 觀看小動物的珍貴短片，認識各種居住在濕地的小動物和鱷魚「貝貝」。
- 走進濕地保護區，尋找有趣動植物的蹤影，觀察牠們的特徵。
- 讓幼童運用不同的感官探究濕地，激發他們對大自然的興趣。
- 主要參觀地點：3 貝貝之家、4 溪畔漫遊徑、5 生態探索區、6 濕地探索中心
- Enjoy the short film show to meet the crocodile "Pui Pui" and other wetlands animals.
- Search for interesting animals and plants in the Wetland Reserve and observe their characteristics.
- Explore the wetlands using children's different senses, and arouse their interests in nature.
- Main attractions: 3 Pui Pui's Home, 4 Stream Walk, 5 Life Zone, 6 Wetland Discovery Centre

B 聽聽大自然 (全年) 全新 New Listen to Our Nature (Whole Year)

- 透過各種有趣的小遊戲，再走進濕地保護區，一同聆聽大自然的聲音。
- 讓幼童運用聽覺認識濕地的重要元素，探索濕地生物。
- 主要參觀地點：3 貝貝之家、4 溪畔漫遊徑、7 濕地工作間
- Listen to nature with our mini-games, explore the sounds of nature in the Wetland Reserve.
- Use the sense of hearing to learn about different organisms and natural elements found in wetland.
- Main attractions: 3 Pui Pui's Home, 4 Stream Walk, 7 Wetlands at Work



C 濕地博物館之旅 (全年) Venturing into the Wetland Museum (Whole Year)



- 走進北地苔原，潛入熱帶沼澤，來一趟環球濕地之旅，讓小小探險家盡情發掘展覽廊中多姿多采的濕地世界。
- 近距離觀察多種有趣的香港濕地生物，引發幼童對大自然的好奇心。
- 化身「小小探險家」，探索濕地謎團，探究大自然的奧妙。
- 主要參觀地點：2 展覽廊、3 貝貝之家
- Venture into the Frozen North and the Tropical Swamp, our young explorers will be amazed by the world of wetlands!
- Arouse children's curiosity about nature through observing the diversity of interesting local wetland animals and plants.
- Become a little detective to discover the mysteries in wetlands and nature.
- Main attractions: 2 Galleries, 3 Pui Pui's Home

幼稚園活動一覽表 List of activities for kindergartens

濕地體驗 I Park Experience I			
活動名稱 Activity	A 與濕地動物做朋友 Making Friends with Wetland Animals	B 聽聽大自然 Listen to Our Nature	C 濕地博物館之旅 Venturing into the Wetland Museum
舉行月份 Months	全年 Whole year		
活動日期 * Date*	逢星期一、三及五 (公眾假期除外) Mondays, Wednesdays and Fridays (Except public holidays)		
活動時間 * Time*	10:00 - 12:00 / 14:00 - 16:00		
活動人數 Capacity	15 - 50	15 - 35	15 - 50
語言 Languages	粵語 / 英語 Cantonese / English		
申請辦法 Application method	網上報名 Online booking		
申請時間 Application period	活動前三星期至三個月 3 months to 3 weeks prior to the date of visit		
每日申請上限 Application quota on each day of visit	最多兩節「濕地體驗 I」活動 Up to two "Park Experience I" tours		
費用 Fee	<ul style="list-style-type: none"> 活動不需額外收費，參加者只須繳付香港濕地公園入場費。 預約「濕地體驗」活動成功後，必須先預繳入場費，以預留活動名額。 The programme is free of charge, but participants are required to pay the admission fee of HKWP. If tour reservation is successful, schools shall pay the admission fee in advance in order to reserve "Park Experience" guided tours. 		

* 活動日期、時間及內容可作微調，詳情請與香港濕地公園學校節目分組聯絡。

* Minor adjustment on activity date, time and content may be arranged. Please contact the School Programme Unit, HKWP for the adjustment when necessary

小學 - 導賞活動 Primary Schools - Guided Tours



小學導賞活動系列配合常識科課程而設，亦適合學校作為「全方位學習日」及「專題研習活動」。導賞活動讓學生走出課室，接觸大自然，及欣賞四周的動植物。透過探究遊戲、實驗和戶外考察，學生可以體驗多姿多采的濕地生態，發掘大自然的寶藏，從而引起他們對自然護理的關注，並學習怎樣在日常生活中善用天然資源。

The guided tour series for primary schools is designed around the General Studies curriculum, and is also suitable for schools conducting "Life-wide Learning Day" and "Project-based activity". The tours aim to encourage students to experience the nature and appreciate the animals and plants around us. Through exploratory games, experiments and field trips, students will discover the diversity of life in wetlands and valuable treasures from nature, which will boost their awareness for nature conservation, and motivate them to utilize natural resources in their daily lives.

導賞活動 主題索引 Index to themes of guided tours



小學 - 濕地體驗 I Primary Schools - Park Experience I

A 生氣勃勃的濕地 (全年) Lively Wetlands (Whole year)



- 透過「濕地尋寶」探究遊戲，學習如何尋找和分辨不同種類的濕地動物。
- 遊覽濕地保護區，搜尋置身其中的珍貴生物，觀察牠們的特徵及有趣的習性。
- 因應季節近距離觀察鱷魚「貝貝」、招潮蟹、彈塗魚、雀鳥等濕地生物。
- 主要參觀地點
(4月 - 10月): 3 貝貝之家、4 溪畔漫遊徑、5 生態探索區、11 紅樹林浮橋
(11月 - 3月): 3 貝貝之家、9 12 河畔 / 泥灘觀鳥屋、11 紅樹林浮橋
- Learn how to look for and identify different types of wetland animals in an exploratory game "Treasure Hunt at Wetlands".
- Observe the characteristics and interesting habits of the precious wildlife species at the Wetland Reserve.
- Experience close encounters with crocodile "Pui Pui", fiddler crabs, mudskippers, birds and other wetland animals according to the seasons.
- Main attractions
(Apr to Oct): 3 Pui Pui's Home, 4 Stream Walk, 5 Life Zone, 11 Mangrove Boardwalk
(Nov to Mar): 3 Pui Pui's Home, 9 12 Riverside Hide/ Mudflat Hide, 11 Mangrove Boardwalk

B 濕地與日常生活 (全年) Wetlands and Our Daily Lives (Whole year)



- 透過「小農夫大冒險」探究遊戲，認識多種來自濕地的食物和日用品。
- 走進濕地保護區，尋找日常生活中的有用濕地植物和動物，了解濕地與人類生活密不可分的關係。
- 主要參觀地點
(4月 - 10月): 11 紅樹林浮橋、7 濕地工作間、4 溪畔漫遊徑、3 貝貝之家
(11月 - 3月): 11 紅樹林浮橋、7 濕地工作間、4 溪畔漫遊徑、3 貝貝之家、2 觀景廊
- Know more about food supplies and daily products from wetlands in an exploratory game "The Adventure of a Little Farmer".
- Visit the Wetland Reserve to look for wetland plants and animals that are related to our daily lives, and recognise the close relationship between wetlands and humans.
- Main attractions
(Apr to Oct): 11 Mangrove Boardwalk, 7 Wetlands at Work, 4 Stream Walk, 3 Pui Pui's Home
(Nov to Mar): 11 Mangrove Boardwalk, 7 Wetlands at Work, 4 Stream Walk, 3 Pui Pui's Home, 2 Viewing Gallery

C 濕地博物館之旅 (全年) Venturing into the Wetland Museum (Whole year)



- 走進展覽廊的不同展區，透過互動展品，讓學生發掘精彩的濕地世界。
- 近距離觀察不同種類的香港濕地生物，引起學生對大自然的興趣。
- 化身小小生物學家，完成他們的第一個自然觀察筆記。
- 有機會闖入展館後台重地，了解博物館之日常運作。
- 主要參觀地點: 2 展覽廊、3 貝貝之家、4 溪畔漫遊徑、5 生態探索區
- Explore the fantastic world of wetlands through interactive exhibits in different zones of the Galleries.
- Spark students' curiosity about nature through observing the diversity of local wetland animals and plants.
- Become a little biologist to make their own nature journal.
- May have the chance to visit the galleries' backstage to understand the daily operation of our museum.
- Main attractions: 2 Galleries, 3 Pui Pui's Home, 4 Stream Walk, 5 Life Zone

D 池塘小偵探 (4-10月) (適合小學四至六年級) Little Pond Detective (Apr to Oct) (Suitable for Primary 4 to 6)

包含 STEM 教育元素的活動
Activity with STEM education elements

- 以 STEM 教育元素增潤戶外學習經歷，讓學生了解日常生活和科學與科技的連繫，及提升學生的基本科學過程技能。
- 進行科學探究，了解水循環和污染的問題。
- 探索濕地保護區，近距離觀察濕地動植物。
- 親身體驗採集水樣本及使用分析儀器進行簡單水質測試。
- 主要參觀地點: 5 生態探索區



- Outdoor learning experience enriched with STEM education elements, to help students recognise the relevance of science and technology to daily life, and enhance their basic science process skills.
- Discover the water cycle and water pollution problems through scientific exploration.
- Observe wetland plants and animals up close in the Wetland Reserve.
- Experience water sampling and using analytical instruments to conduct simple water quality tests.
- Main attractions: 5 Life Zone

小學 - 濕地體驗 II (全年) Primary Schools - Park Experience II (Whole Year)



- 適合 100 - 200 名師生。
- 透過介紹濕地的短片，認識濕地多樣的生境。
- 走訪公園多個主題區，尋找具季節特色的動植物，一睹濕地生物百態。
- 主要參觀地點
(4 月 - 10 月): 3 貝貝之家、4 溪畔漫遊徑、5 生態探索區、7 濕地工作間、11 紅樹林浮橋
(11 月 - 3 月): 3 貝貝之家、4 溪畔漫遊徑、7 濕地工作間、11 紅樹林浮橋、9 12 河畔 / 泥灘觀鳥屋
- Suitable for 100 - 200 teachers and students.
- Enjoy a video show about wetlands and learn about the diverse wetland habitats.
- Search for seasonal wetland animals and plants in various thematic areas of the Park.
- Main attractions
(Apr to Oct): 3 Pui Pui's Home, 4 Stream Walk, 5 Life Zone, 7 Wetlands at Work, 11 Mangrove Boardwalk
(Nov to Mar): 3 Pui Pui's Home, 4 Stream Walk, 7 Wetlands at Work, 11 Mangrove Boardwalk, 9 12 Riverside Hide/ Mudflat Hide



黑臉琵鷺
Black-faced Spoonbill

為甚麼我經常搖頭擺腦? Do you know why I always shake my head?

黑臉琵鷺會把長的匙狀嘴放到淺水中覓食，頭部和嘴巴同時擺動有助探測食物的位置。牠們主要捕食魚類和水生動物。

Black-faced spoonbills put the spoon-shaped beak into shallow water when feeding. The beak can help them to detect the position of the prey when sweeping sideways in the water. They mainly feed on fishes and other aquatic animals.

最佳觀賞月份：11 月 - 3 月
Best observing months: Nov to Mar

小學活動一覽表 List of activities for primary schools

活動名稱 Activity	濕地體驗 I Park Experience I				濕地體驗 II Park Experience II
	A 生氣勃勃的濕地 Lively Wetlands	B 濕地與日常生活 Wetlands and Our Daily Lives	C 濕地博物館之旅 Venturing into the Wetland Museum	D 池塘小偵探 Little Pond Detectives	
舉行月份 Months	全年 Whole year			4 月 - 10 月 Apr - Oct	全年 Whole year
活動日期 * Date*	逢星期一、三及五 (公眾假期除外) Mondays, Wednesdays and Fridays (Except public holidays)				逢星期四進行 (公眾假期除外) Thursdays (Except public holidays)
活動時間 * Time*	10:00 - 12:00 / 14:00 - 16:00				
活動人數 Capacity	15 - 50			15 - 30	100 - 200
語言 Languages	粵語 / 英語 Cantonese / English				
申請辦法 Application method	網上報名 Online booking				
申請時間 Application period	活動前三星期至三個月 3 months to 3 weeks prior to the date of visit				
每日申請上限 Application quota on each day of visit	最多兩節「濕地體驗 I」活動 Up to two "Park Experience I" tours				一節 「濕地體驗 II」活動 One "Park Experience II" tour
費用 Fee	<ul style="list-style-type: none"> 活動不需額外收費，參加者只須繳付香港濕地公園入場費。 預約「濕地體驗」活動成功後，必須先預繳入場費，以預留活動名額。 The programme is free of charge, but participants are required to pay the admission fee of HKWP. If tour reservation is successful, schools shall pay the admission fee in advance in order to reserve "Park Experience" guided tours. 				

* 活動日期、時間及內容可作微調，詳情請與香港濕地公園學校節目分組聯絡。

* Minor adjustment on activity date, time and content may be arranged. Please contact the School Programme Unit, HKWP for the adjustment when necessary.

中學 - 導賞活動及 「其他學習經歷」活動 Secondary Schools - Guided Tours & OLE Activities



中學系列的導賞活動設有多種別具特色的主題，配合初中科學和地理科，及高中生物、組合科學、綜合科學、地理和通識教育科。透過專題探討和戶外考察，學生可以認識濕地豐富的生物多樣性，及深入了解濕地生境的重要性。學生會探討不同環境議題，從多角度分析人類與大自然的關係，並明白自然護理的需要。

「其他學習經歷」活動則配合新高中課程而設，為學生提供一系列「工作有關的經驗」與「德育及公民教育」的活動。參與學生會獲發證書作為「其他學習經歷」的時數證明。

The guided tour series for secondary schools covers a variety of topics that are relevant to the Science and Geography curricula for Junior Secondary, and Biology, Combined Science, Integrated Science, Geography and Liberal Studies curricula for Senior Secondary. Through topical discussions and field trips, students will be introduced to the diversity of wetland wildlife, and gain a thorough understanding of the importance of wetland habitats. They will investigate various environmental issues, reflect on the relationship between humans and nature, and recognise the need for nature conservation.

The "Other Learning Experiences" (OLE) activities ties in with the New Senior Secondary Curriculum (NSSC) by offering a series of "Career-related Experiences" and "Moral and Civic Education" activities for senior secondary students. Participants will receive a certificate of participation as proof of the OLE learning hours.

導賞活動 主題索引 Index to themes of guided tours



* 1-4: 「其他學習經歷」活動
"Other Learning Experiences" Activities

中學 - 濕地體驗 I Secondary Schools - Park Experience I

A 濕地保育與可持續發展 (全年) Wetland Conservation and Sustainable Development (Whole Year)



- 了解本港的濕地保育工作及保護本地物種的措施。
- 走過河溪和紅樹林，認識不同濕地生境的特徵及對人類的惠益。
- 觀察在濕地棲息的動植物，探討生物與環境之間的微妙關係。
- 走訪公園每個角落，探索可持續發展概念如何活用於綠色建築設計及認識香港濕地公園的保育工作。
- 了解取材於大自然的匠心設計如何造就綠色建築。
- 主要參觀地點：2 訪客中心、3 貝貝之家、4 溪畔漫遊徑、6 濕地探索中心、11 紅樹林浮橋、9 12 河畔 / 泥灘觀鳥屋

- Learn about Hong Kong's conservation efforts and measures for protecting local wildlife.
- Visit streams and mangroves to learn about the characteristics of and benefits provided by these wetland habitats.
- Observe the diversity of wetland wildlife, and explore their relationship with the environment.
- Roam around the Park to discover how the concepts of sustainable development are incorporated in the green architectural design of the park and learn about different nature conservation measures in HKWP.
- Understand how green architecture makes meticulous use of natural building materials.
- Main attractions : 2 Visitor Centre, 3 Pui Pui's Home, 4 Stream Walk, 6 Wetland Discovery Centre, 11 Mangrove Boardwalk, 9 12 Riverside Hide/ Mudflat Hide

B 濕地博物館之旅 (全年) Venturing into the Wetland Museum (Whole Year)

- 透過室內展覽廊的互動展品，讓學生發掘精彩的濕地世界。
- 走進北地苔原，潛入熱帶沼澤，來一趟環球濕地之旅。
- 以濕地記者的身分，一同探討全球的環境議題，如氣候變化、瀕危物種。
- 主要參觀地點：2 展覽廊
- Explore the fantastic world of wetlands through interactive exhibits in the Galleries.
- Venture into the Frozen North and the Tropical Swamp to meet the amazing animals from wetlands around the world.
- Become a news reporter to investigate various global environmental issues such as climate change and situation of endangered species.
- Main attraction: 2 Galleries



C 水生植物觀察 (全年) Aquatic Plant Watch (Whole year)

包含 STEM 教育元素的活動
Activity with STEM education elements



- 以探究學習模式，使用科學儀器觀察水生植物樣本，推論水生植物如何適應環境。
- 走進河溪和池塘，實地觀察和認識水生植物的多樣性。
- 探討水生植物對人類和大自然的功用。
- 主要參觀地點：4 溪畔漫遊徑、5 生態探索區、7 濕地工作間、8 演替之路
- By adapting enquiry-based learning method, students can deduce the adaptation features of aquatic plants through examining plant specimens with scientific apparatus.
- Venture into streams and ponds to appreciate the diversity of aquatic plant species.
- Learn about the contributions of aquatic plants to humans and our nature.
- Main attractions: 4 Stream Walk, 5 Life Zone, 7 Wetlands at Work, 8 Succession Walk

D 探索紅樹林 (4-10月) Exploring the Mangroves (Apr to Oct)

包含 STEM 教育元素的活動
Activity with STEM education elements



- 於紅樹林浮橋觀察紅樹的結構特徵及生境，從而推論它們如何適應潮濕帶的嚴峻環境。
- 尋找於紅樹林棲息的各種動物，了解紅樹林生境對其他生物的重要性。
- 潮退時，更可一睹招潮蟹、彈塗魚等有趣生物的風采。
- 透過簡單實驗，了解紅樹名稱的由來。
- 主要參觀地點：11 紅樹林浮橋
- Visit the Mangrove Boardwalk and observe the mangroves' structural features and habitats to investigate how mangroves adapt to the tough intertidal environment.
- Search for different animal species in mangroves, and understand the importance of mangroves for other wildlife.
- Look for interesting fiddler crabs and mudskippers at low tide.
- Understand the meaning of the Chinese name of mangrove through simple experiments.
- Main attraction: 11 Mangrove Boardwalk

E 蜻蜓觀察 (5-9月) Dragonfly Watch (May to Sep)



- 解構蜻蜓和豆娘的身體結構，並掌握用以分辨兩者特徵的技巧。
- 認識牠們鮮為人知的生命故事和重要的生態價值。
- 利用望遠鏡進行生態調查，尋找這些鮮艷奪目的「有翅寶石」。
- 主要參觀地點：4 溪畔漫遊徑、5 生態探索區、8 演替之路
- Examine body structures of dragonflies and damselflies, and identify key characteristics for differentiating the two groups.
- Learn about their fascinating life cycles and important roles in ecosystem.
- Conduct ecological surveys with the use of binoculars, to spot these brilliant and eye-catching "winged jewels" of wetlands.
- Main attractions: 4 Stream Walk, 5 Life Zone, 8 Succession Walk

F 鳥類觀察 (11-3月) Bird Watch (Nov to Mar)

- 比較各種鳥類的身體結構，分析鳥類形態與覓食習性的關係。
- 探討候鳥遷徙的秘密，認識本港常見的品種。
- 化身成生態普查員，於不同的濕地生境使用望遠鏡進行鳥類普查。
- 主要參觀地點：3 貝貝之家、4 溪畔漫遊徑、9 12 河畔 / 泥灘觀鳥屋
- Compare body structures of different types of birds, and analyse their relationship with the birds' feeding habits.
- Discover the secrets behind bird migrations, and know more about species commonly found in Hong Kong.
- Become an ecological surveyor, and use binoculars to conduct bird censuses at different wetland habitats.
- Main attractions: 3 Pui Pui's Home, 4 Stream Walk, 9 12 Riverside Hide/ Mudflat Hide



G 蝴蝶觀察 (4-9月) Butterfly Watch (Apr to Sep)

全新
New



- 介紹蝴蝶獨特的身體結構和適應特徵。
- 了解蝴蝶在完全變態的生命週期中不同形態。
- 識別本港常見的蝴蝶品種，認識牠們與寄主植物和蜜源植物的奇妙關係。
- 使用顯微鏡探索蝴蝶既華麗又實用的秘密。
- 主要參觀地點：14 蝴蝶園
- Introduce unique body structures and adaptive features of butterflies.
- Understand metamorphosis of butterflies.
- Identify some common butterfly species in Hong Kong, as well as the interesting relationships with their host plants and nectar plants.
- Using microscope to reveal the secrets of butterflies.
- Main attractions: 14 Butterfly Garden

* 2021 年 4 月登場
Will be available in April 2021



弧邊招潮蟹
Fiddler Crab

我真的會「招潮」嗎？ Can I attract the tide?

只有雄蟹擁有大螯足，揮動大螯足用來守護領土和吸引異性。

Only males have large claws. They wave the large claws for defending territories and attracting females.

最佳觀賞月份：4 月 - 10 月（潮水約 1 米或以下）

Best observing months: Apr to Oct (tidal level around or below 1 metre)

中學 - 濕地體驗 II (全年) Secondary Schools - Park Experience II (Whole Year)



- 適合 100 – 200 名師生。
- 透過介紹濕地的短片，認識濕地面臨的挑戰。
- 走訪公園多個主題區，尋找季節特色，一睹濕地生物百態。
- 主要參觀地點
(4 月 – 10 月): 3 貝貝之家、4 溪畔漫遊徑、5 生態探索區、7 濕地工作間、11 紅樹林浮橋
(11 月 – 3 月): 3 貝貝之家、4 溪畔漫遊徑、7 濕地工作間、11 紅樹林浮橋、
9 12 河畔 / 泥灘觀鳥屋
- Suitable for 100 – 200 teachers and students.
- Enjoy a video show about wetlands and learn about the challenges they are facing.
- Search for wetland wildlife and seasonal animals and plants in various thematic areas of the Park.
- Main attractions
(Apr to Oct): 3 Pui Pui's Home, 4 Stream Walk, 5 Life Zone, 7 Wetlands at Work, 11 Mangrove Boardwalk
(Nov to Mar): 3 Pui Pui's Home, 4 Stream Walk, 7 Wetlands at Work, 11 Mangrove Boardwalk, 9 12 Riverside Hide/ Mudflat Hide



彈塗魚
Mudskipper

你見到我在泥灘上跳來跳去嗎?
猜猜我是甚麼類別的動物?
Can you see me skipping on mudflat?
Guess what kind of animal I am!

彈塗魚是一種特別的魚類。牠們在潮退時會爬上泥灘覓食，可以離開水源一段時間。同時，牠們擁有一般魚類的特徵，如魚鱗、魚鰭和腮。

Mudskipper is a special type of fish. They can breath on land for a while. Yet, they have scales, fins and gills, just like other fish.

最佳觀賞月份：4 月 – 10 月（潮水低於 1 米）
Best observing months: Apr to Oct (Tidal level below 1 metre)

中學 - 「其他學習經歷」活動 Secondary Schools - "OLE" - Activities

1 樹木檢查體驗 Experiencing Tree Inspection

包含 STEM 教育元素的活動
Activity with STEM education elements

學生會透過不同活動去認識與樹木相關的知識及親身嘗試為樹木進行基本的評估。

Students will learn about trees and conduct basic tree assessment through different activities.



2 訪客服務 Visitor Services

學生會學習導賞知識及技巧，以義務導賞員的身份於展覽廊或濕地保護區為訪客進行解說。

Students will gain the necessary knowledge and skills of a wetland interpreter, and provide interpretation services to visitors at designated locations in the Galleries or the Wetland Reserve.



3 水質測試 Water Quality Tests

包含 STEM 教育元素的活動
Activity with STEM education elements

學生可親身參與抽取水樣本及進行不同的質測試，了解影響水質的因素變化對濕地生物的影響。

Students will participate in water sampling and conduct various water quality tests to learn about factors influencing water quality, and understand the significance of water quality changes to wetland wildlife.



4 植被護理工作 Vegetation Maintenance Works

學生會在濕地保護區體驗除草等公園日常的植被護理工作，並認識常見的濕地植物及外來入侵種。

Students will experience the Park's daily vegetation maintenance works such as weeding in the Wetland Reserve, and learn more about common wetland plants and invasive exotic species.



中學活動一覽表
List of activities for secondary schools

活動名稱 Activity	濕地體驗 I Park Experience I							濕地體驗 II Park Experience II	「其他學習經歷」活動 “Other Learning Experiences” Activities			
	A 濕地保育與可 持續發展 Wetland Conservation and Sustainable Development	B 濕地博物館 之旅 Venturing into the Wetland Museum	C 水生植物觀察 Aquatic Plant Watch	D 探索紅樹林 Exploring the Mangroves	E 蜻蜓觀察 Dragonfly Watch	F 鳥類觀察 Bird Watch	G 蝴蝶觀察 Butterfly Watch		I 樹木檢查體驗 Experiencing Tree Inspection	2 訪客服務 Visitor Services	3 水質測試 Water Quality Tests	4 植被護理工作 Vegetation Maintenance Works
舉行月份 Months	全年 Whole year			4 月 – 10 月 Apr - Oct	5 月 – 9 月 May - Sep	11 月 – 3 月 Nov - Mar	4 月 – 9 月 Apr - Sep	全年 Whole year				
活動日期 * Date*	逢星期一、三及五（公眾假期除外） Mondays, Wednesdays and Fridays (Except public holidays)							逢星期四 （公眾假期除外） Thursdays (Except public holidays)	逢星期一、三、五及六（公眾假期除外） Mondays, Wednesdays, Fridays and Saturdays (Except public holidays)			
活動時間 * Time*	10:00 -12:00 / 14:00 -16:00							10:00 - 12:30 / 14:00 - 16:30				
活動人數 Capacity	15 - 50					15 - 30	100 - 200	15 - 30		20 - 50		
語言 Languages	粵語 / 英語 Cantonese / English							粵語 Cantonese	粵語 / 英語 Cantonese / English		粵語 Cantonese	
申請辦法 Application method	網上報名 Online booking							請於本公園網頁下載申請表格 Application form is available on HKWP's website				
申請時間 Application period	活動前三星期至三個月 3 months to 3 weeks prior to the date of visit											
每日申請上限 Application quota on each day of visit	最多兩節「濕地體驗 I」或「其他學習經歷」活動 Up to two “Park Experience I” or “Other Learning Experiences” activities							一節「濕地體驗 II」活動 One “Park Experience II” tour	最多兩節「濕地體驗 I」或「其他學習經歷」活動 Up to two “Park Experience I” or “Other Learning Experiences” activities			
費用 Fee	<div><div><ul style="list-style-type: none">活動不需額外收費，參加者只須繳付香港濕地公園入場費。預約「濕地體驗」或「其他學習經歷」活動成功後，必須先預繳入場費，以預留活動名額。The programme is free of charge, but participants are required to pay the admission fee of HKWP.If tour reservation is successful, schools shall pay the admission fee in advance in order to reserve “Park Experience” or "Other Learning Experiences" guided tours.</div></div>											

* 活動日期、時間及內容可作微調，詳情請與香港濕地公園學校節目分組聯絡。

* Minor adjustment on activity date, time and content may be arranged. Please contact the School Programme Unit, HKWP for the adjustment when necessary.

濕地自遊賞 Self-paced Visit Offers



香港濕地公園是一個舉辦戶外學習活動的理想地點，適合學校進行戶外考察、跨學科學習、「其他學習經歷」活動，以及學校旅行等。學校除了可以報名參加公園的導賞活動，亦可舉行自助參觀之旅，使活動安排更具彈性。

香港濕地公園現在為學校提供「濕地自遊賞」優惠。自行參觀公園的學校只需填妥表格，即可辦理門票預訂及教具借用*服務，每位參觀師生更可獲贈精美紀念品乙份！快來展開輕鬆愉快的濕地之旅！

Hong Kong Wetland Park is an ideal venue for outdoor learning activities, cross-curricular learning, OLE activities, as well as school outings. Apart from joining the Park's guided tours, self-paced visit is another option for schools to arrange their visits with more flexibility.

To make your visits more enjoyable, services for ticket booking and teaching aid lending* are now offered to schools organising self-paced visits at the Park. Each participating teacher and student will also receive a complimentary souvenir! Start your fun-filled wetland journey at the Hong Kong Wetland Park!

* 詳情請參閱第 30 及 34 頁
Please refer to Page 30 and 34 for details

登記辦法 Registration method	請於本公園網頁下載登記表格 Registration form is available on HKWP's website
登記時間 Registration period	參觀日期前最少 7 個工作天 At least 7 working days prior to the date of visit

濕地遊蹤 (教育局學習活動資源套) Wetland Footprints (Learning Activity Resource Package, Education Bureau)



對象：幼稚園
Target: Kindergartens

為提供合適的戶外環境與設施讓幼兒自由探索、遊戲和各種活動為本的體驗，教育局和漁農自然護理署協作，利用香港濕地公園的部分戶外設施，發揮資源中心用途，並配合課程發展議會的《幼稚園教育課程指引》(2017) 中的「大自然與生活」之學習目的，製作了一套供教師使用的學習活動資源套——《濕地遊蹤》。

有興趣參與「濕地遊蹤」的幼稚園只需填妥表格，即可辦理門票預訂及資源套教具借用服務，每位參觀學生更可獲贈幼兒活動冊乙本！

有關「濕地遊蹤」的資料，請瀏覽本公園網站：
<https://www.wetlandpark.gov.hk/tc/education/wetland-footprints-edb>

The Education Bureau (EDB) carries out the Kindergarten Resource Centres Programme to provide kindergarten students with an appropriate environment to have various activity-based experiences. As one of the items under this Programme, in collaboration with Agriculture, Fisheries and Conservation Department (AFCD) and capitalising on part of the outdoor facilities at the Hong Kong Wetland Park to serve the functions of resource centres for kindergartens.

Education Bureau has produced a Learning Activity Resource Package "Wetland Footprints" for teachers' use. The package ties in with the learning objectives of "Nature and Living" in the kindergarten Education Curriculum Guide (2017) complied by the curriculum Development Council.

Interested kindergartens only need to fill in a registration form and will enjoy services for ticket booking and package teaching aid lending. Each participating student will also get a Children Activity Booklet!

For details of the "Wetland Footprints", please visit HKWP's website:
<https://www.wetlandpark.gov.hk/en/education/wetland-footprints-edb>

登記辦法 Registration method	請於本公園網頁下載登記表格 Registration form is available on HKWP's website
登記時間 Registration period	參觀日期前最少 2 星期前 At least 2 weeks prior to the date of visit

建議參觀路線 Route Suggestions

學校可以按學習需要，選擇合適的參觀路線，突出學習主題，令自助參觀活動流程更暢順。

Different suggested visiting routes can be chosen according to students' learning target, teachers can plan a smoother self-paced visit in the Park as well as an enjoyable learning journey for the students.

觀鳥攻略 Bird Watching

學習主題 Theme	鳥類 Birds
建議月份 Months	10 月 – 3 月 Oct to Mar
時長 Duration	約 1.5 小時 Around 1.5 hours
路線 Route	2 訪客中心 → 8 演替之路 → 9 河畔觀鳥屋 → 2 訪客中心 2 Visitor Centre → 8 Succession Walk → 9 Riverside Hide → 2 Visitor Centre

尋找有翅寶石 Dragonfly Watching

學習主題 Theme	蜻蜓 Dragonflies
建議月份 Months	3 月 – 10 月 Mar to Oct
時長 Duration	約 1.5 小時 Around 1.5 hours
路線 Route	2 訪客中心 → 4 溪畔漫遊徑 → 5 生態探索區 → 2 訪客中心 2 Visitor Centre → 4 Stream Walk → 5 Life Zone → 2 Visitor Centre

勇闖紅樹林 Mangrove Adventure

學習主題 Theme	紅樹林 Mangroves
建議月份 Months	全年 (其中四月 – 十月較適合觀察招潮蟹及彈塗魚) Whole year (Suggested time for fiddler crab and mudskipper observation: Apr to Oct)
時長 Duration	約 1.5 小時 Around 1.5 hours
路線 Route	2 訪客中心 → 4 溪畔漫遊徑 → 6 濕地探索中心 → 8 演替之路 → 11 紅樹林浮橋 → 2 訪客中心 2 Visitor Centre → 4 Stream Walk → 6 Wetland Discovery Centre → 8 Succession Walk → 11 Mangrove Boardwalk → 2 Visitor Centre

於網上下載相關學校自助參觀專案以配合教學活動！
Relevant Self-paced Visit Plan is available online!

尋蝶 Butterfly Watching

學習主題 Theme	蝴蝶 Butterflies
建議月份 Months	3 月 – 11 月 Mar to Nov
時長 Duration	約 2 小時 Around 2 hours
路線 Route	2 訪客中心 → 4 溪畔漫遊徑 → 11 紅樹林浮橋 → 14 蝴蝶園 → 2 訪客中心 2 Visitor Centre → 4 Stream Walk → 11 Mangrove Boardwalk → 14 Butterfly Garden → 2 Visitor Centre

環遊世界濕地 Wetlands around the World

學習主題 Theme	了解世界不同的濕地 Wetlands around the world
建議月份 Months	全年 Whole year
時長 Duration	約 1.5 小時 Around 1.5 hours
路線 Route	2 訪客中心 → 2 展覽廊 → 3 貝貝之家 → 2 訪客中心 2 Visitor Centre → 2 Exhibition Galleries → 3 Pui Pui's Home → 2 Visitor Centre

於網上下載相關學校自助參觀專案以配合教學活動！
Relevant Self-paced Visit Plan is available online!

尋找綠色足印 · 可持續發展 Sustainable Development

學習主題 Theme	綠色建築 Green Architecture
建議月份 Months	全年 Whole year
時長 Duration	約 1.5 小時 Around 1.5 hours
路線 Route	1 入口廣場 → 2 訪客中心 → 2 展覽廊 → 3 貝貝之家 → 2 訪客中心 1 Entry Plaza → 2 Visitor Centre → 2 Exhibition Galleries → 3 Pui Pui's Home → 2 Visitor Centre

濕地植物學習徑 Wetland Plants

學習主題 Theme	植物 Plants
建議月份 Months	全年 Whole year
時長 Duration	約 1.5 小時 Around 1.5 hours
路線 Route	2 訪客中心 → 4 溪畔漫遊徑 → 7 濕地工作間 → 8 演替之路 → 10 果樹路 → 2 訪客中心 2 Visitor Centre → 4 Stream Walk → 7 Wetlands at Work → 8 Succession Walk → 10 Fruits Path → 2 Visitor Centre

中文 English



網上自助參觀專案參考連結
Link to online Self-paced visit plan

可供租用場地 Venues for Hire

香港濕地公園的放映室及多用途室可供學校租用作與自然護理或教育有關的會議、工作坊或教育活動等用途。

Hong Kong Wetland Park provides theatre and multi-function rooms hiring services. Schools are welcome to rent the venues for meetings, workshops or education activities that are related to nature conservation and education.



多用途室 1
Multi-function room 1
座位 Seating capacity: 50



多用途室 2
Multi-function room 2
座位 Seating capacity: 50



放映室 Theatre
座位 Seating capacity: 207



教師教學支援 Teaching Support for Educators

網上教學資源

Online Teaching Resources

香港濕地公園製作了多種教學材料，包括教學資料頁、生物圖鑑、小冊子、教材套及工作紙，以及學校自助參觀專案，以協助老師進行有關濕地生態及保育的教學活動，各種教學資源均可於公園網頁下載。

Hong Kong Wetland Park has produced numerous teaching resources, including fact sheets, wildlife identification cards, pamphlets, education kits and worksheets, and self-paced visit plans for helping teachers to prepare educational activities related to wetland ecology and conservation. All teaching resources are available for download on HKWP's website.



教材套及工作紙
Teaching Kits and
Worksheets



小冊子
Pamphlets



生物圖鑑
Wildlife Identification Cards



學校自助參觀專案
Self-paced Visit Plans
for Schools

教師工作坊 Teachers' Workshops

香港濕地公園定期舉辦不同主題的教師工作坊，讓教師置身自然教室，認識濕地及棲息其中的動植物，發掘公園內豐富的教學資源，更會為教師提供相應的參觀行程及教學建議，為參觀之旅做足準備。所有教師工作坊費用全免！

有關教師工作坊的最新消息，請瀏覽本公園網站：

<https://www.wetlandpark.gov.hk/tc/education/school-tw>

此外，我們亦會協助學校在濕地公園進行教師發展日，詳情請與香港濕地公園學校節目分組聯絡。

Hong Kong Wetland Park regularly organises workshops for teachers, to enhance their knowledge of wetland habitats and wildlife, and to familiarise them with the Park's teaching resources. We will also provide suggestions for corresponding itineraries and teaching activities to facilitate teachers' planning for education activities at the Park. All teachers' workshops are free of charge!

For details on upcoming teachers' workshops, please visit HKWP's website:

<https://www.wetlandpark.gov.hk/en/education/school-tw>

In addition, we also provide support to schools in organising teacher development days in HKWP, please contact the School Programme Unit, HKWP for details.



教育展覽板借用 Lending Service of Education Display Panels

香港濕地公園提供不同主題的教育展覽板供學校免費借用，讓學生在園外也能一起認識濕地。展覽板主題包括：

To encourage students to learn about wetlands at the school campus, Hong Kong Wetland Park offers schools a free lending service of education display panels with various themes. Topics of display panels include:



濕地與我們	Wetlands and Us
濕地的活化石 – 馬蹄蟹	The Living Fossil in Wetlands - Horseshoe Crab
探訪水生植物	Discovering Aquatic Plants
紅樹林知多少	Know More About Mangroves
觀賞蝴蝶	Butterfly Watching
海洋奇珍 – 綠海龜	Treasure of the Ocean - Green Turtle
《瀕危野生動植物種國際貿易公約》與濕地危物種	"CITES" and the Threatened Wetland Species
蜻蛉倩影	The Charming Dragonflies
攜手保護濕地，應對氣候變化	Caring for Wetlands - an Answer to Climate Change
尋找鳥蹤	Watching Birds

申請辦法 Application method	請於本公園網頁下載登記表格 Registration form is available on HKWP's website
申請時間 Application period	借用日期前最少兩星期 At least 2 weeks prior to the borrowing date
借用限額 Borrowing limit	每次最多兩套 Two sets for each application



教具借用 Lending Service of Teaching Aids

為支援教師在香港濕地公園進行教學活動，本公園設免費教具借用服務，供教師在帶領活動當日使用。可借用的教具包括：

To facilitate teachers conducting education activities at Hong Kong Wetland Park, the Park provides a free lending service of teaching aids for schools on their visiting days. Teaching aids available for loan include:



動物拼圖	Magnetic Puzzle
紅樹林潮汐 A3 圖片	A3 Tidal Change Pictures
是日午餐 (食物鏈活動)	Today's Lunch (Food - web Game) (Chinese version only)
生態探索區生物圖鑑	Field Guide of Life Zone
觀鳥便鑑	Field Guide of Birds
A3 導賞用動植物圖冊 (野生動植物篇)	Pictorial Guide for Interpretation (Wildlife)
A3 導賞用動植物圖冊 (鳥類篇)	Pictorial Guide for Interpretation (Birds)

申請辦法 Application method	請於本公園網頁下載登記表格 Registration form is available on HKWP's website
申請時間 Application period	借用日期前最少 7 個工作天 At least 7 days prior to the borrowing date
借用限額 Borrowing limit	每款教具最多借用五套 5 sets for each teaching aid

教師專頁 Teachers' Page

香港濕地公園為教師特設「教師專頁」，提供不同的教育資訊，包括：
Teachers can visit the "Teachers' Page" to:



最新教育活動資訊，包括導賞活動、教師工作坊及網上報名等
acquire the latest information on education programmes, such as guided tours, teachers' workshop and tours online application



教學資源下載
download teaching resources



計劃行程的資訊及注意事項
obtain the information on trip planning and points to note



連結至教師專頁 /
Link to Teachers' Page

中文



English



最新消息 What's New

1. 全新濕地體驗 I 導賞團 – 蝴蝶篇將於明年 4 月登場！有關詳情請留意濕地公園的教師專頁公佈。
A new Park Experience I programme about butterfly will be available in April 2021. Interested schools please stay tuned for the updates at the "Teachers' Page" of HKWP.



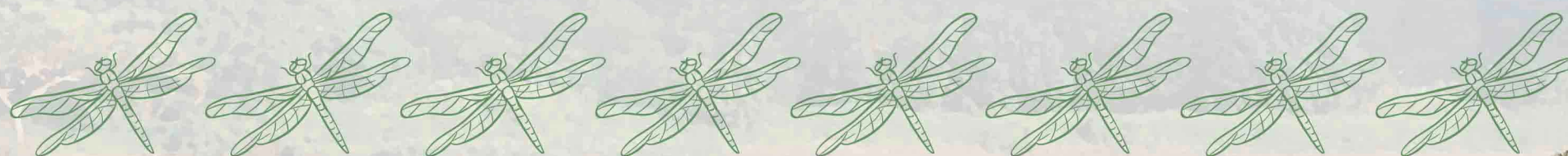
2. 網上繳款服務已正式啟用，老師可隨時隨地輕鬆付款預留濕地體驗活動名額。
Online payment is now available for schools to reserve the Park Experience guided tours.
3. 教師專頁新增了教育局的教育電視影片連結，精選了與濕地及環境教育有關的影片，讓老師可掌握更豐富的濕地資訊。
Selected ETVs are linked to our page for teachers' convenience to look for relevant wetland education materials.

野生動植物月曆
Wildlife Calendar



冬候鳥 Wintering Birds

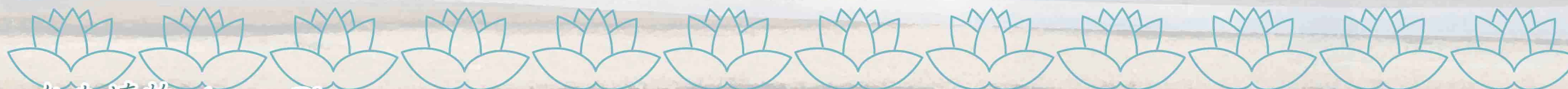
過境遷徙鳥
Passage Migrants
(Birds)



蜻蜓 Dragonflies



蝴蝶 Butterflies



水生植物 Aquatic Plants



紅樹林 Mangroves



所有教育活動詳情、網上報名或教學資源的更新以網上公佈為準，
詳情請瀏覽本公園的教師專頁：

<https://www.wetlandpark.gov.hk/tc/education/teacher-frontpage>
或電郵至：education@wetlandpark.gov.hk

For updates on all educational activities, online booking and teaching
resources, please refer to our Teachers' Page:

<https://www.wetlandpark.gov.hk/en/education/teacher-frontpage>
or email to: education@wetlandpark.gov.hk

香港濕地公園

Hong Kong Wetland Park

地址/Address: 香港新界天水圍濕地公園路

Wetland Park Road, Tin Shui Wai, New Territories, Hong Kong

電話/Tel: 3152 2666

傳真/Fax: 2278 0915

網址/Website: www.wetlandpark.gov.hk

2020年 8月版本
August 2020 Edition

